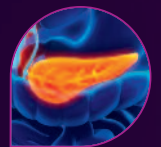


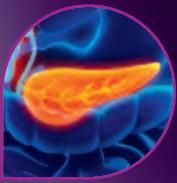
Naturally effective.
Turns imaging on.



Product information



Lumivision[®]
Die LiquidMatrix.



LumiVision® – Die LiquidMatrix.

Only available medical device for the preparation of oral MRI procedures:

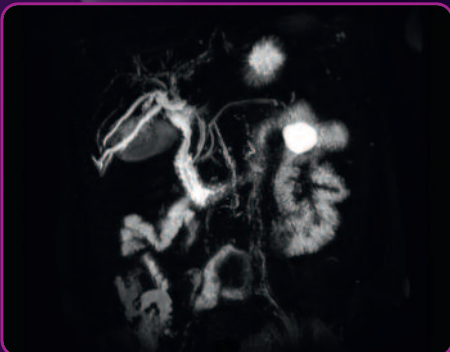
- of the abdomen or the digestive tract
- especially for MRCP
- standardised and CE-marked
- cost-efficient

LumiVision® – naturally effective – sharp images!

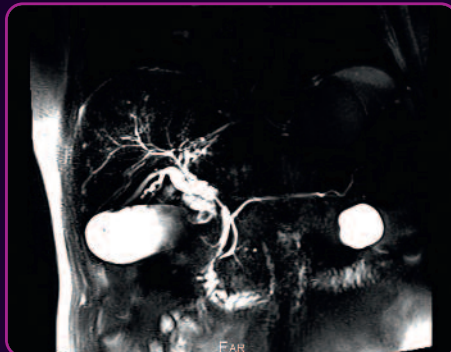
- only available product for the preparation of T2-weighted MRI
- homogenizing matrix improving the wetting adherence to surfaces due to its physical properties
- diminishes undesirable signal overlays caused by liquids in stomach and abdomen

Only the important things are being visualised!

Example of use:



MRI pre LumiVision®



post LumiVision®



LumiVision®

Die LiquidMatrix.

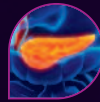
LumiVision® – easy application:

- practically no adverse effects
- normally, 1 bottle (250 mL) is equivalent to 1 application
- 1 – 2 bottles to be diluted with the same / up to the double amount of water
- may also be administered in children
- MRCP may be performed already 15 minutes upon application

LumiVision® – the innovation presented by b.e.imaging

- die LiquidMatrix.
- PZN 10917171 (German Reg. No. for pharmaceuticals and medical products)

For further information on LumiVision® please refer to your local sales representative or to www.liquidmatrix.de



LumiVision®

Die LiquidMatrix.

Information for the user

LumiVision® is a medical device for the preparation of imaging techniques such as MRI (Magnetic Resonance Imaging) of the abdomen or the digestive tract. LumiVision® is a homogenizing matrix and improves the wetting adherence to surfaces due to its physical properties.

Description:

LumiVision® is a preparation of concentrates, such as pineapple concentrate, organic agave syrup, blackcurrant concentrate, guar gum (thickener), defoamers. LumiVision® contains no preservatives and no dyes.

Application:

Invert the bottle several times before use!

Apply LumiVision® always as instructed by your physician. In case of uncertainties please consult your physician or pharmacist.

Unless otherwise prescribed, the dosage in adults is 250 - 500 ml (1 - 2 bottles) LumiVision® diluted with the same amount up to the double amount of water. In most cases, a total volume of 500 - 1.000 ml (0.5 - 1 litre) oral solution is sufficient - depending on your body type (height, weight). For an examination of the lower part of the digestive tract, the maximum amount should be taken preferentially, for the upper sections generally smaller amounts suffice. In children, the dosage should be reduced according to the height and weight.

Precautions

LumiVision® should not be used in case of known hypersensitivity to any of its ingredients.

LumiVision® is suitable for oral application. LumiVision® must not be injected.

LumiVision® can have a laxative effect due to its natural content of fructose (approx. 29 g per bottle of 250 ml).

If you have a known fructose malabsorption, you should take LumiVision® only after consultation with your physician.

If you are a diabetic, be sure to adjust your medication according to the sugar content (approx. 6.5 BU per bottle of 250 ml) of LumiVision®.

LumiVision® should not affect your ability to drive and use machines.

Although there are no studies available, LumiVision® can be used in children, pregnant women and during breastfeeding because the components correspond to foods.

If you are unclear or have any questions please consult with your physician.

Interactions with other medicinal products are not known.

Keep LumiVision® out of reach of children.

Protect from light and temperatures above 25°C.

The expiration date of this product is printed on the outer packaging and on the bottle. LumiVision® should not be used after the expiration date.

Once opened, consume on the same day.

How is the product available:

250 ml LumiVision® for oral application.

PZN: 10917171

Manufacturer

b.e.imaging GmbH

Dr.-Rudolf-Eberle-Straße 8-10
D-76534 Baden-Baden, Germany

Tel.: +49 7223 9669-70

Fax: +49 7223 9669-653

info@be-imaging.de

www.bendergruppe.com

Date of Information

December 2016

CE



b.e.imaging

b.e.imaging GmbH
Dr.-Rudolf-Eberle-Straße 8-10
D-76534 Baden-Baden
Tel.: +49 72 23 96 69-70
www.bendergruppe.com